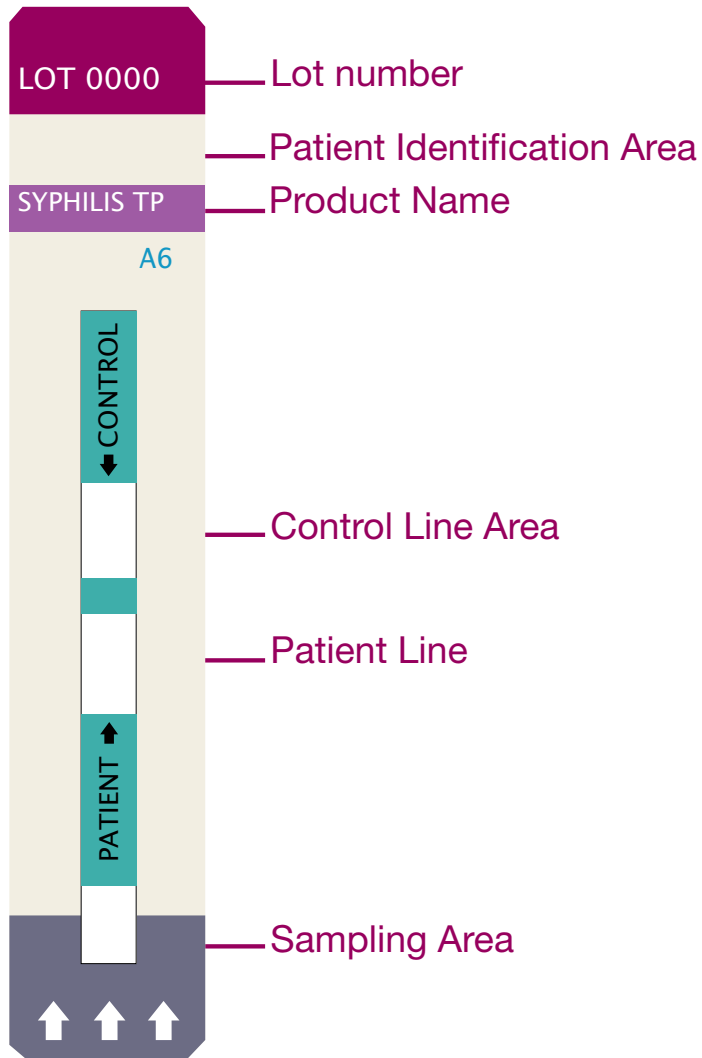


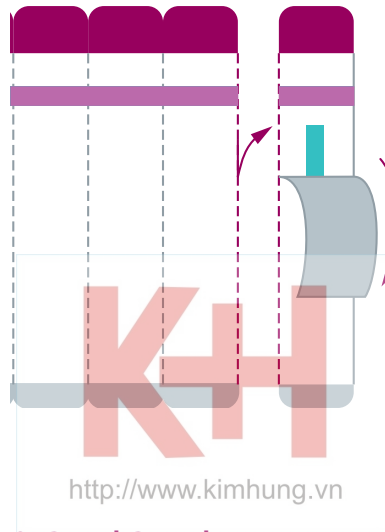
Refer to the User Guide and Product Insert for complete instructions.

Product Information



1. Prepare Test

Tear one strip from the right and remove cover.



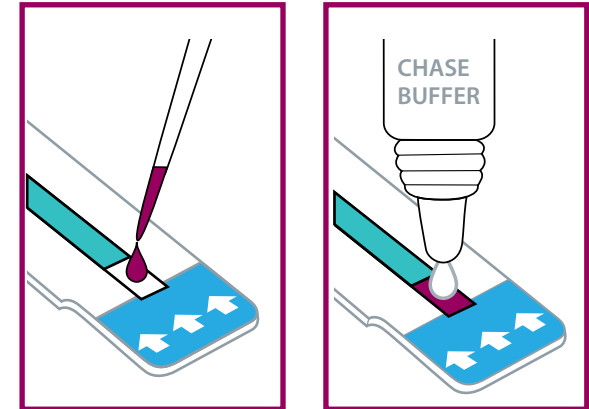
3. Read Results

Read the results after 15 minutes.

The control line should appear for all results. If it does not appear, the results are invalid.

2. Add Sample

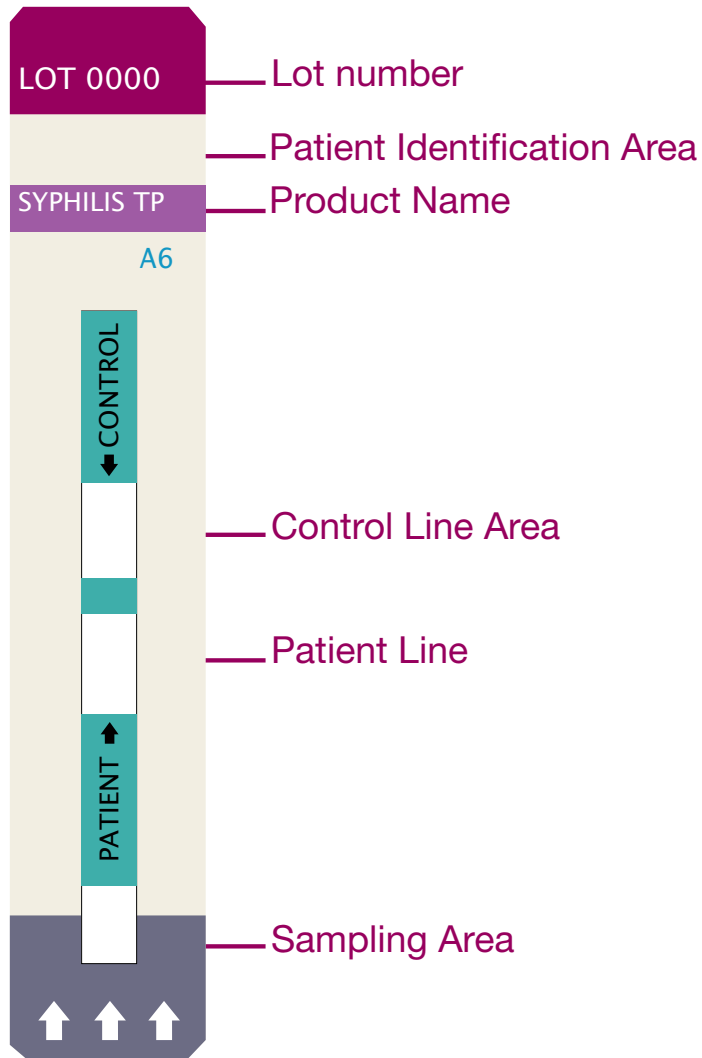
Add 50µl sample of whole blood, wait 1 minute and add chase buffer.



Line	Reactive	Non-reactive	Invalid
Control			
Patient			

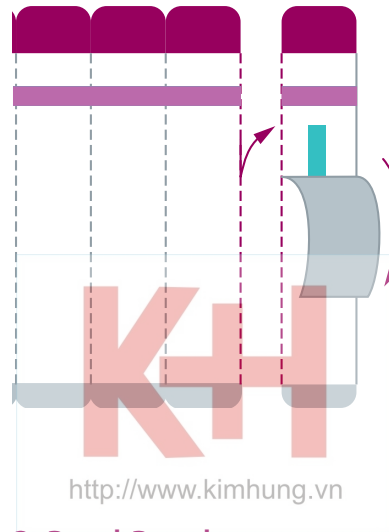
Refer to the User Guide and Product Insert for complete instructions.

Product Information



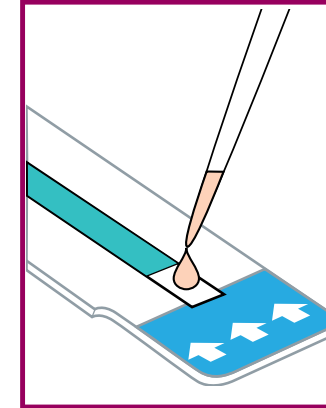
1. Prepare Test

Tear one strip from the right and remove cover.



2. Add Sample

Add 50µl of serum or plasma to sample pad and wait 15 minutes.



3. Read Results

Read the results after 15 minutes.

The control line should appear for all results. If it does not appear, the results are invalid.

Line	Reactive	Non-reactive	Invalid
Control			
Patient			